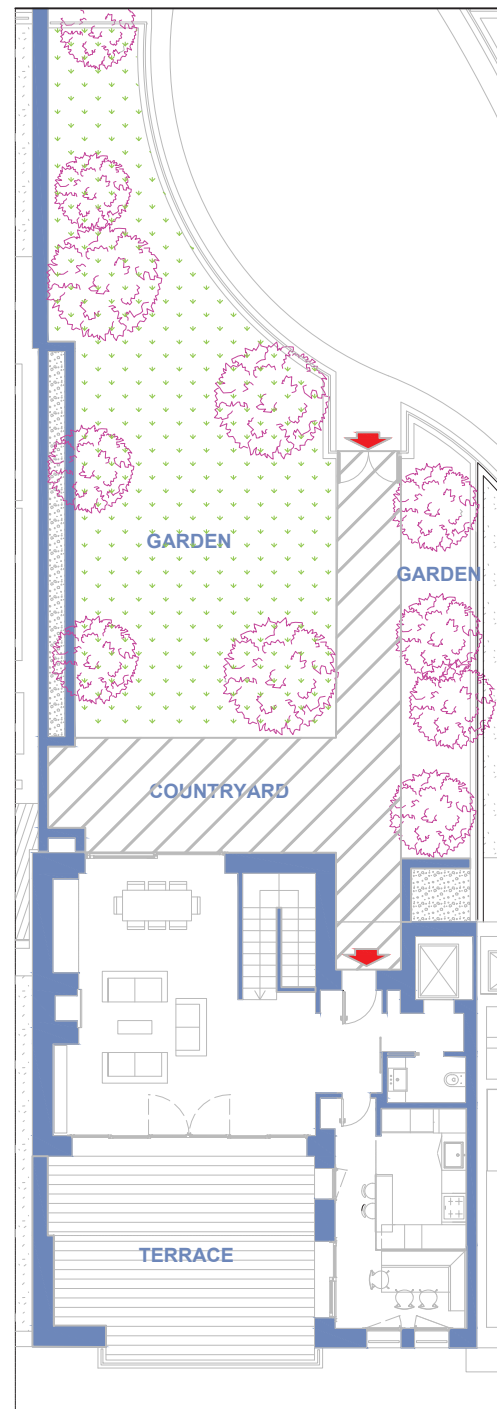


**ITALY - TRIESTE
PORTOPICCOLO
UNIT : S4**

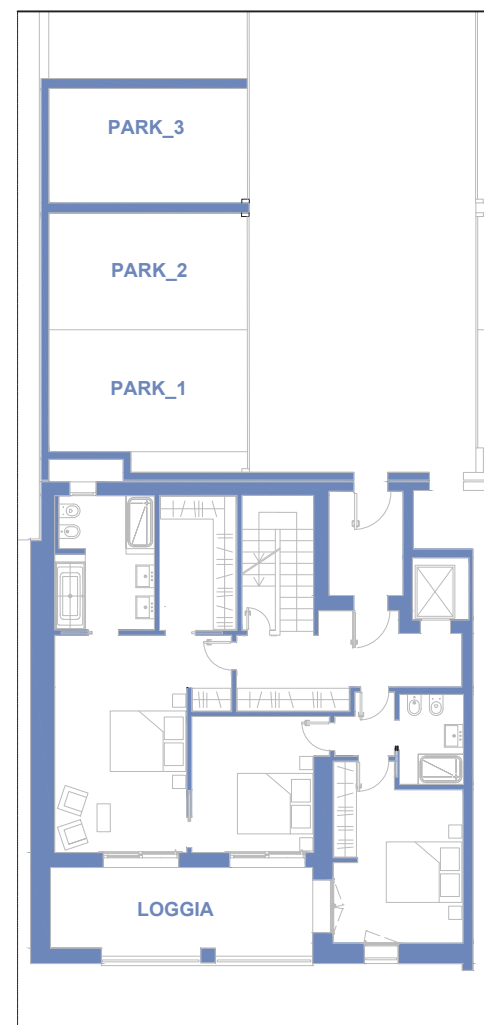
Second Floor:	104,84 m ²
Firts Floor:	118,61 m ²
Ground Floor:	126,78 m ²
Garden:	184,01 m ²
Countryyard:	49,18 m ²
Terrace:	39,23 m ²
Loggia:	16,07 m ²
Porch:	5,92 m ²

Garage:	16,70 m ²
	16,43 m ²
	17,23 m ²

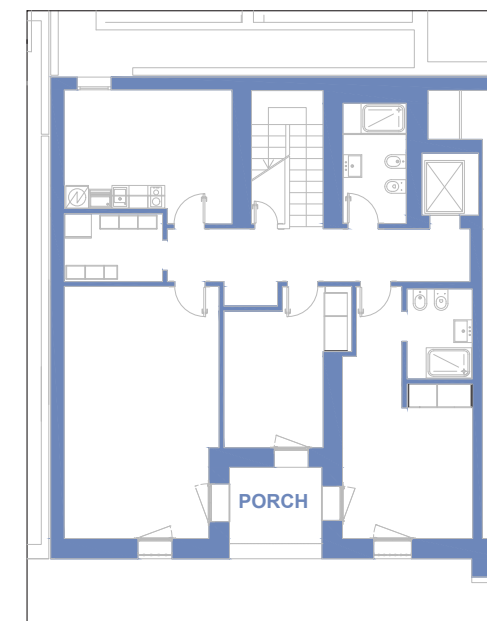
SCALE 1:200



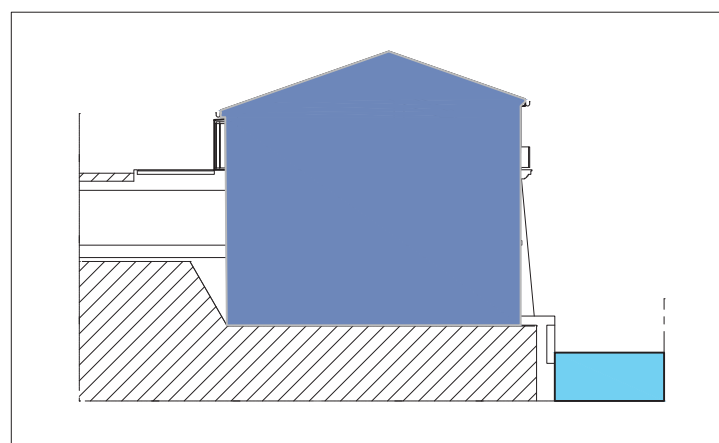
Second floor



First floor



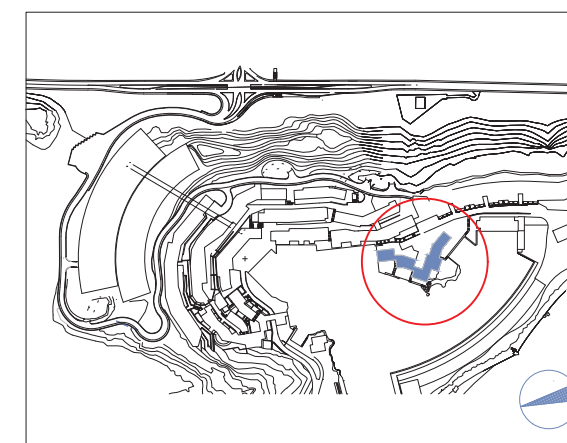
Ground floor



General Section



General Map



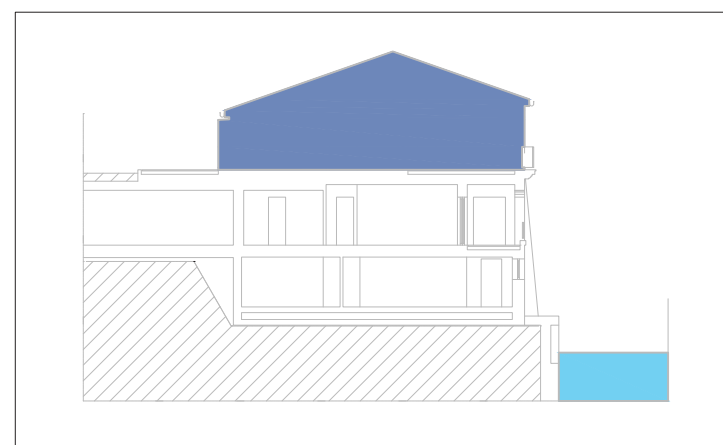
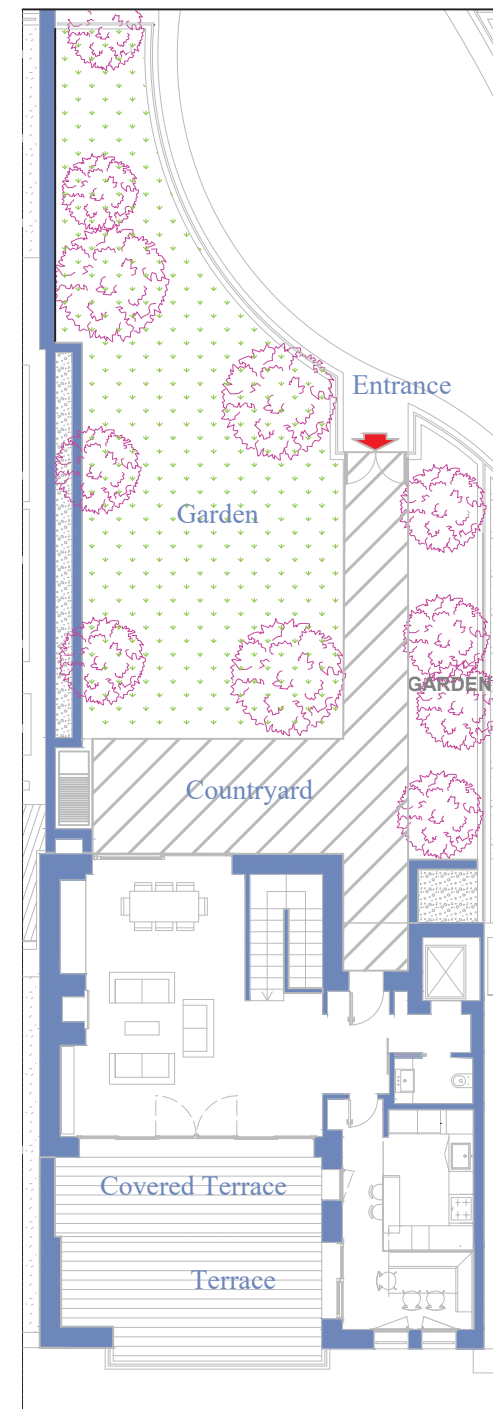
General Plan



**ITALY - TRIESTE
PORTOPICCOLO
UNIT : S4**

FLOOR: Second
SQM.: 104,84
SQM. GARDEN: 184,01
SQM. COUNTRYYARD: 49,18
SQM. TERRACE: 39,23

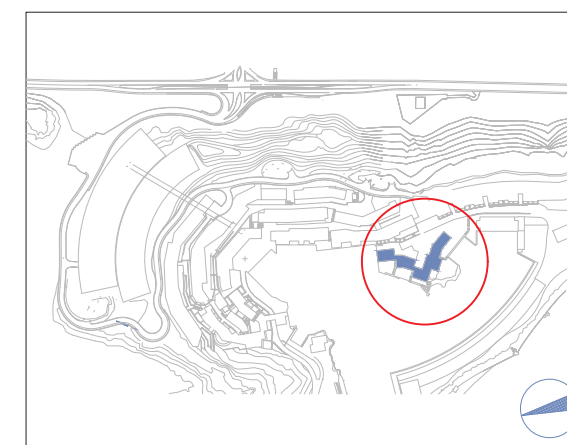
**SCALE 1:100
SCALE 1:200**



General Section



General Map

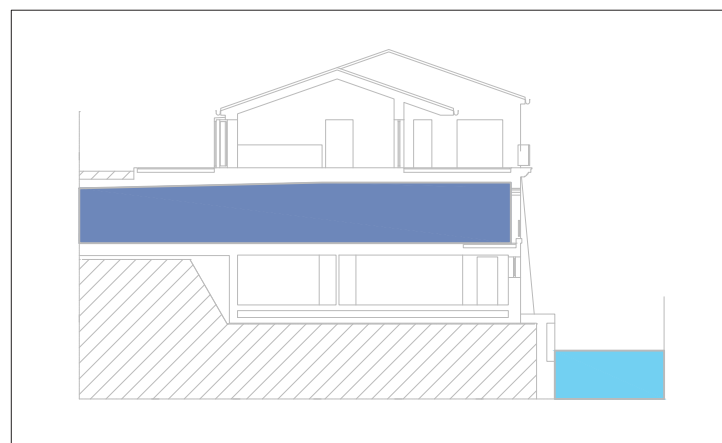
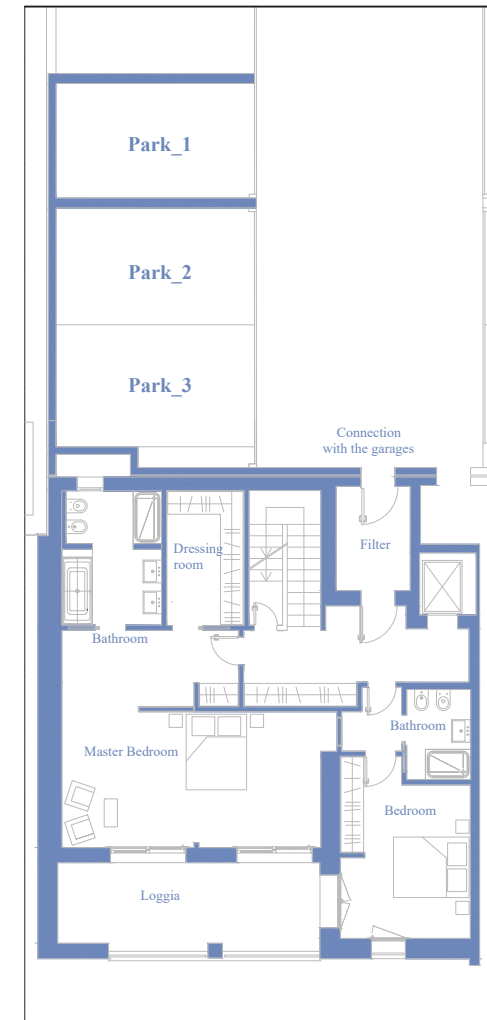


General Plan

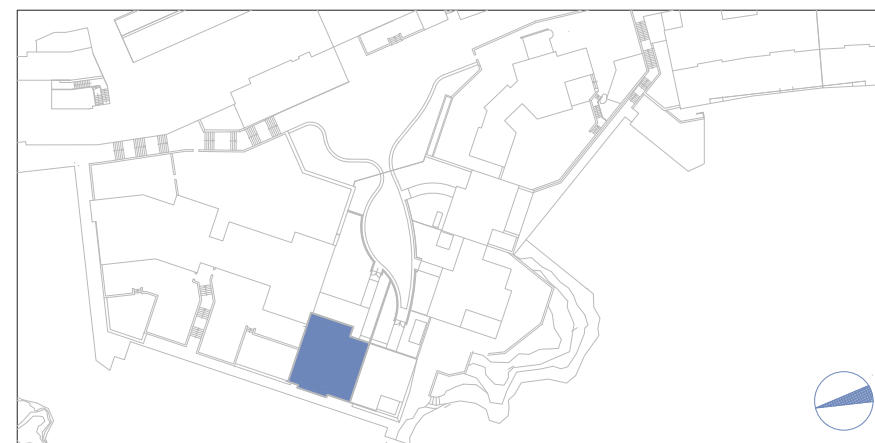
**ITALY - TRIESTE
PORTOPICCOLO
UNIT : S4**

FLOOR:	First
SQM.:	118,61
SQM. LOGGIA:	16,07
SQM. GARAGES:	16,70
	16,43
	17,23

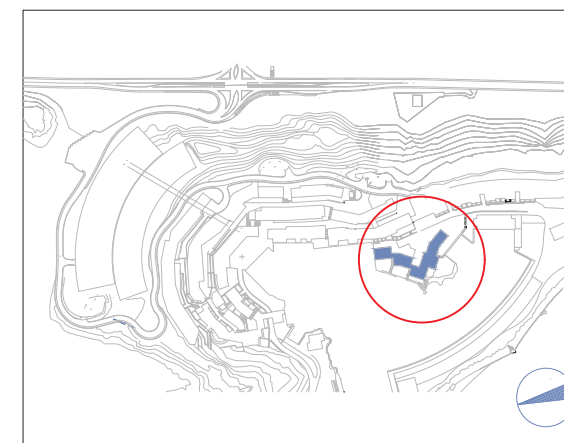
SCALE 1:100
SCALE 1:200



General Section



General Map

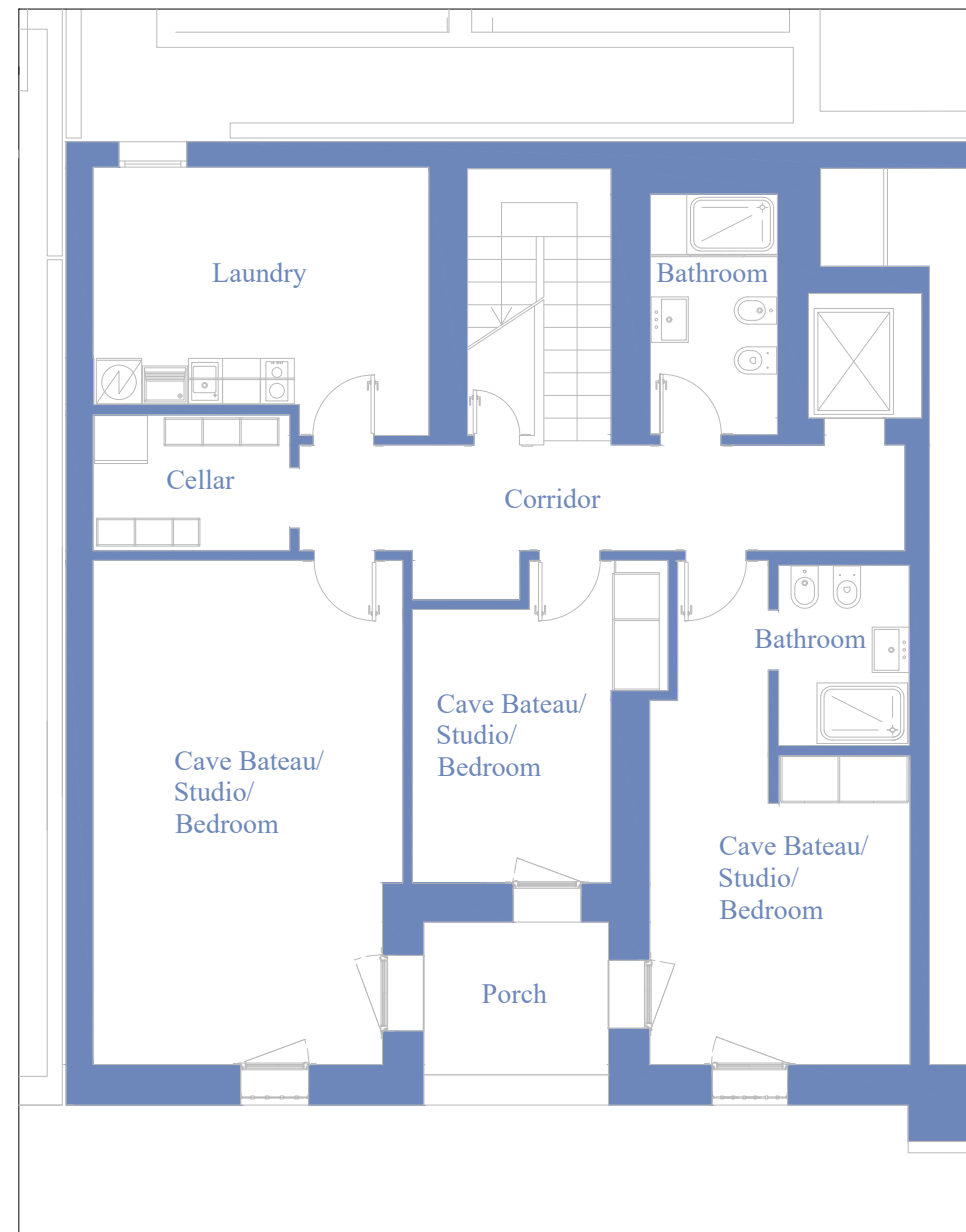


General Plan

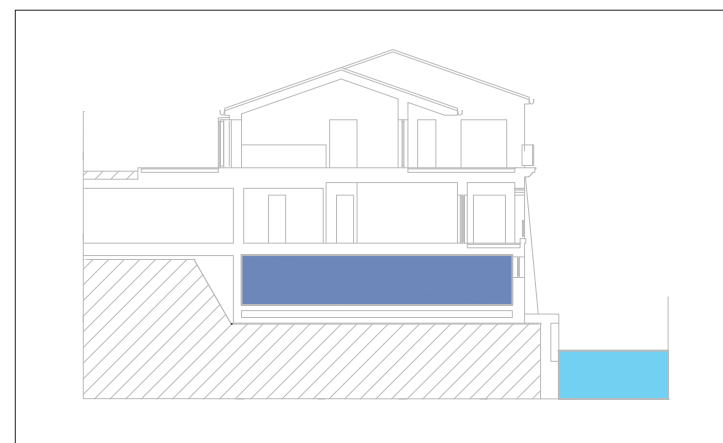
ITALY - TRIESTE
PORTOPICCOLO
UNIT : S4

FLOOR:	Ground
SQM.:	126,78
SQM. PORCH:	5,92

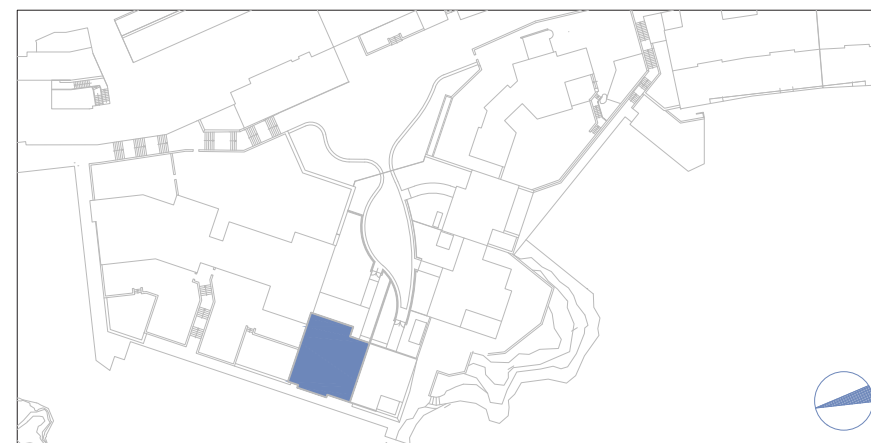
SCALE 1:100



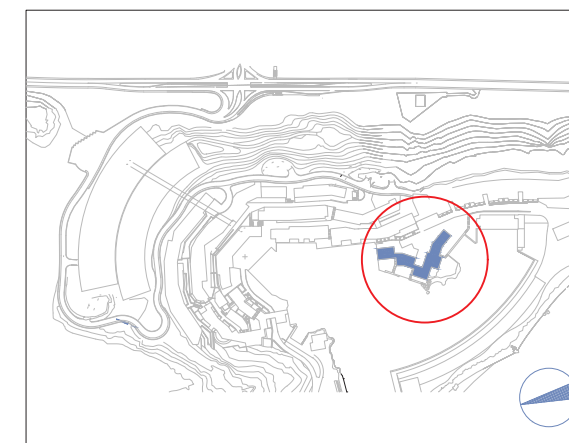

Scale 1:100



General Section



General Map



General Plan