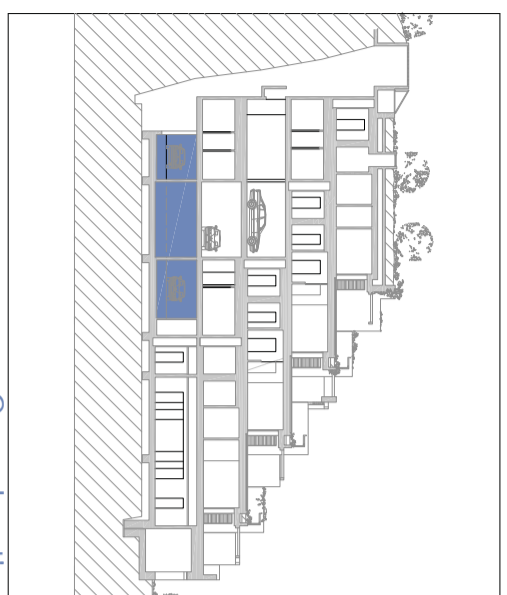
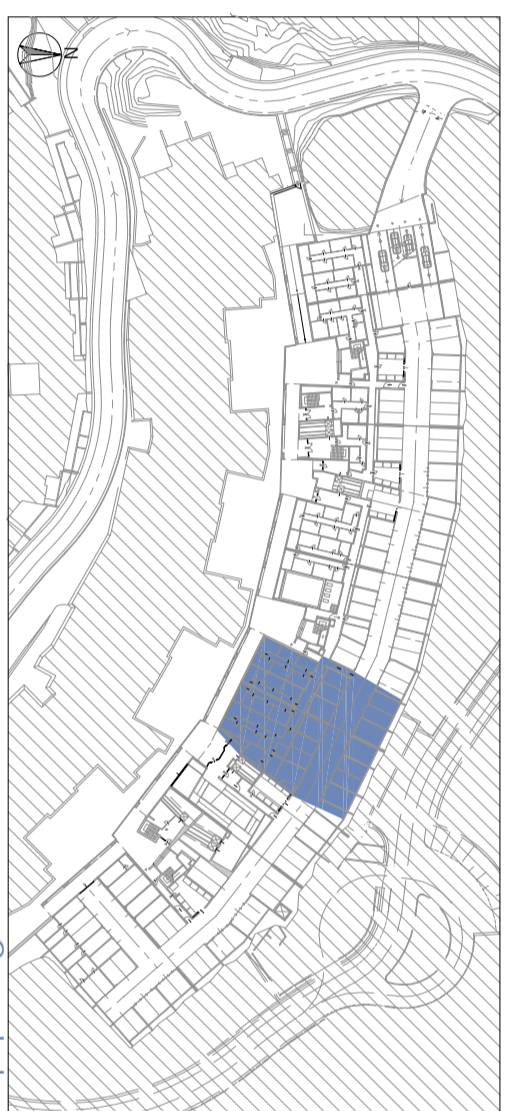




Scala 1:200

General section

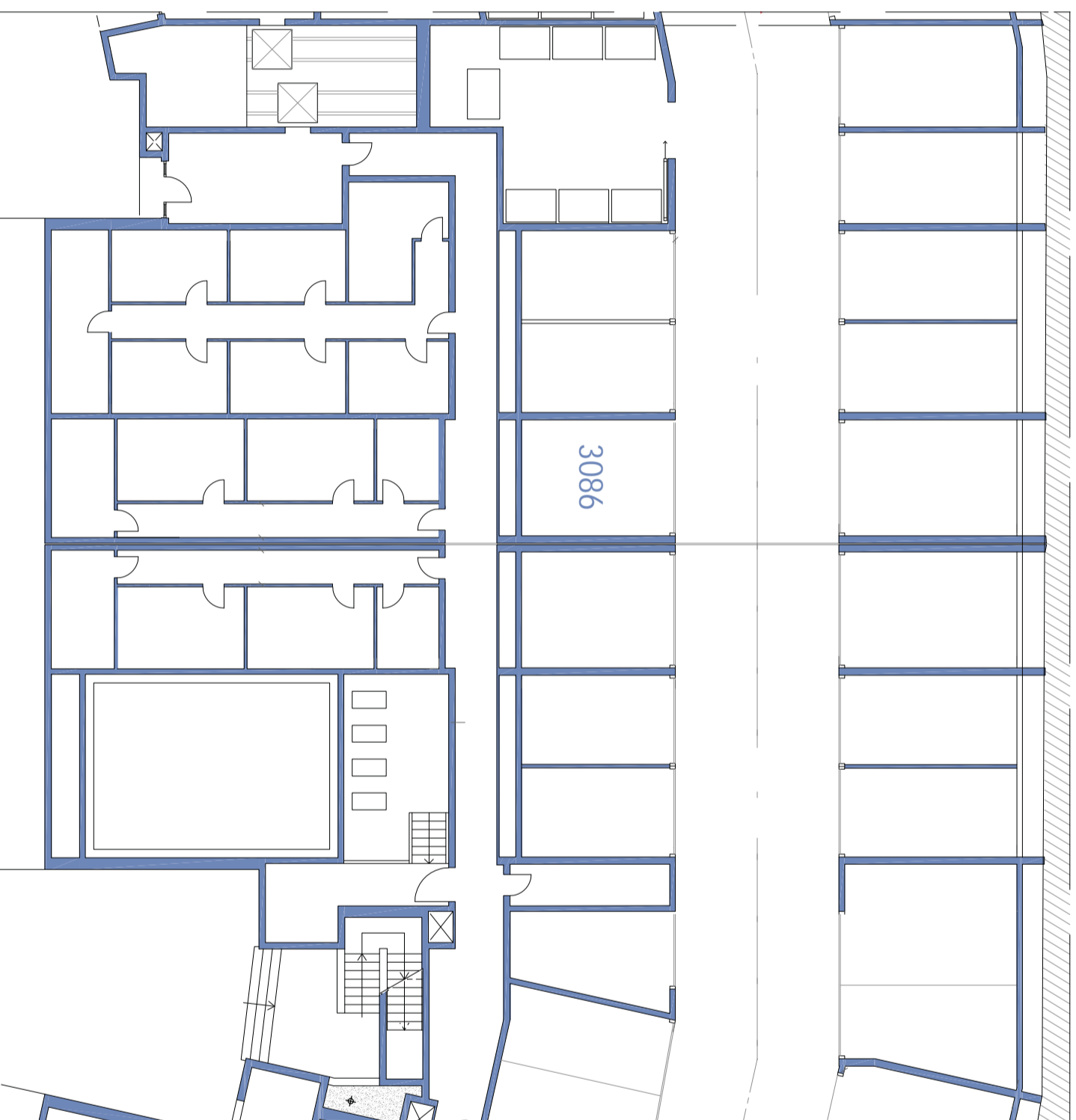


General plan

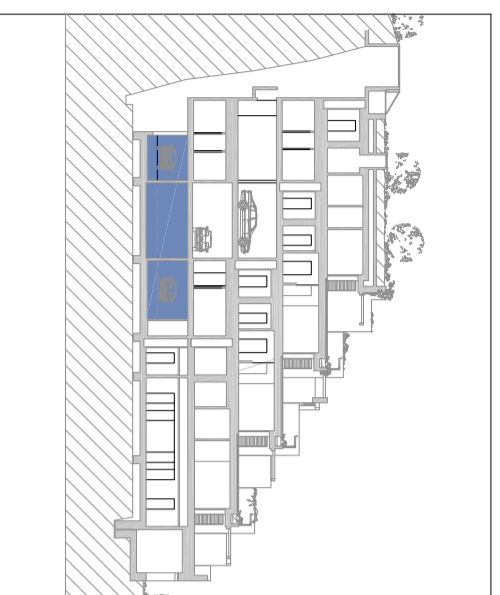


General map

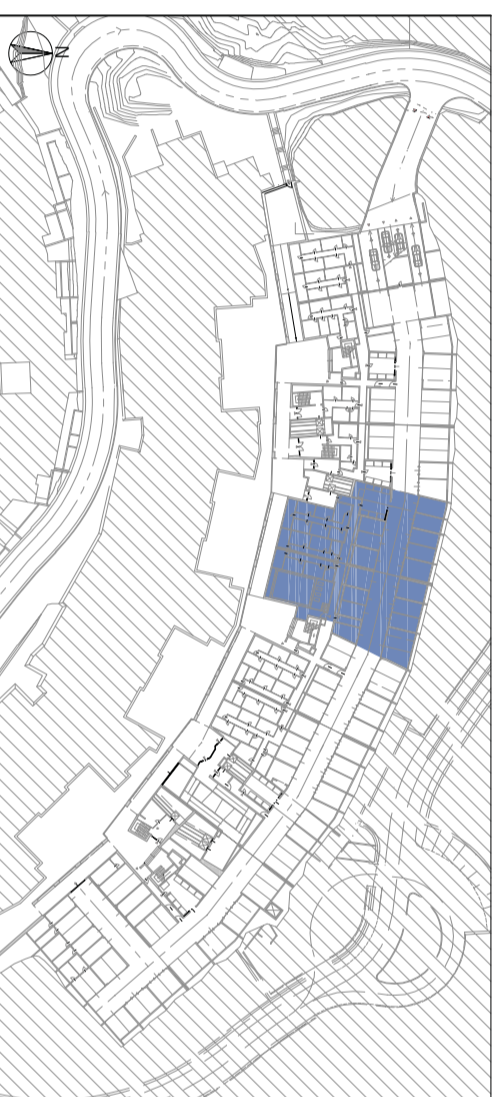
ID Storage: E1-48	
Location	Trieste - Portopiccolo
Street	
Floor	Ground floor
Sqm	13,42
Condo fees (per Year)	Euro 24,00



Scala 1:200



General Section



General Map

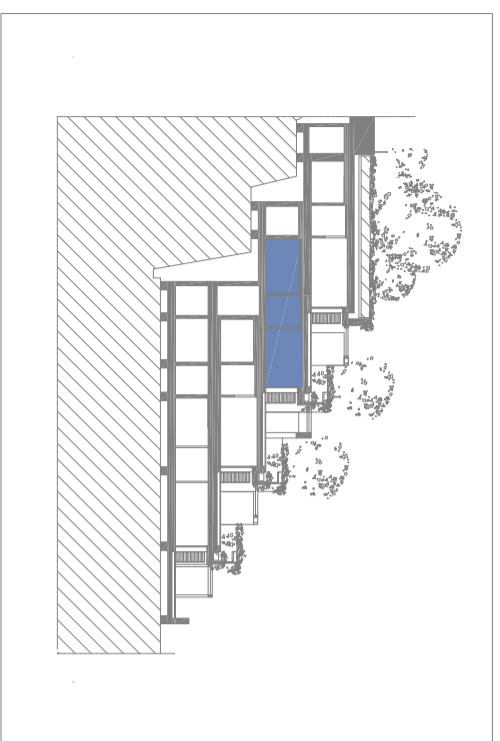


General Plan

ID Park: 3086	
Location	Trieste - Portopiccolo
Street	
Floor	Ground floor
Sqm	22,35
Condo fees (per year)	122,00



Scale 1:1.100



General section



General map



General plan

ID Unit: A3-13

Location	Trieste - Portopiccolo
Street	Portopiccolo
Floor	Third
Sqm	141,89
Condo fees (per Year)	Euro 3.758,00